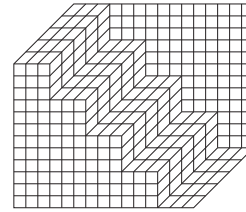


Technical Annex 13E Pool Level Factual Information



Buro Happold

007838 Hayle Harbour Regeneration
Pool Level Factual Information

May 2007

Revision 00

Revision	Description	Issued by	Date	Checked
00	For Information	CJR	18/5/07	ADT

O:\007838 Hayle Harbour Redevelopment\F08 - Civils(BH)\Reports\Pool Inundation regime\070518 C 007838 For Information 00.doc

This report has been prepared for the sole benefit, use and information of ING Real Estate Development (Hayle Harbour Company) Ltd for the purposes set out in the report or instructions commissioning it. The liability of Buro Happold Limited in respect of the information contained in the report will not extend to any third party.

author Chris Rose

signature 

date 16/5/07

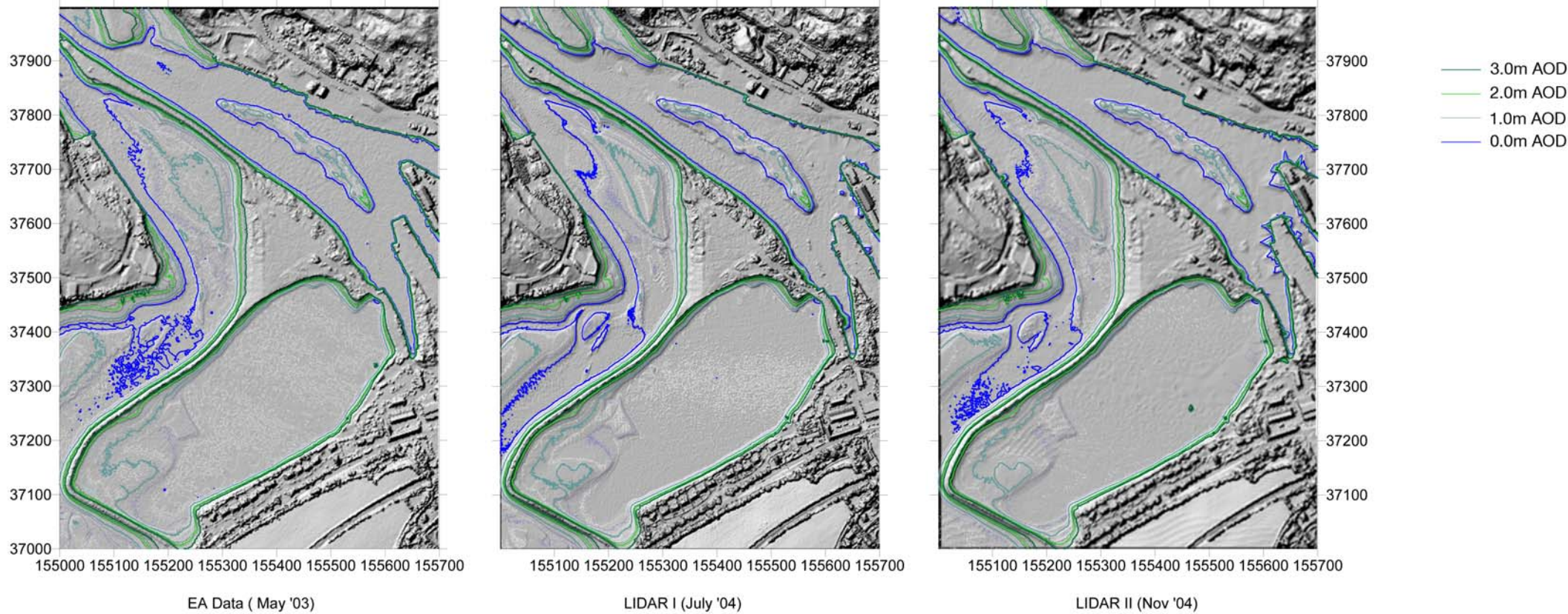
approved Alan Travers

signature 

date

Contents

Figure 1	Carnsew Pool – LIDAR Contour Comparison
Figure 2	Carnsew Pool – Inundation Levels
Figure 3	Copperhouse Pool – LIDAR Contour Comparison
Figure 4	Copperhouse Pool – Inundation Levels
Figure 5	Carnsew and Copperhouse Pool wetted perimeter and area exposed by tide



Aerial Photo (2007)

Figure 1
Carnsew Pool
LIDAR Contour comparison

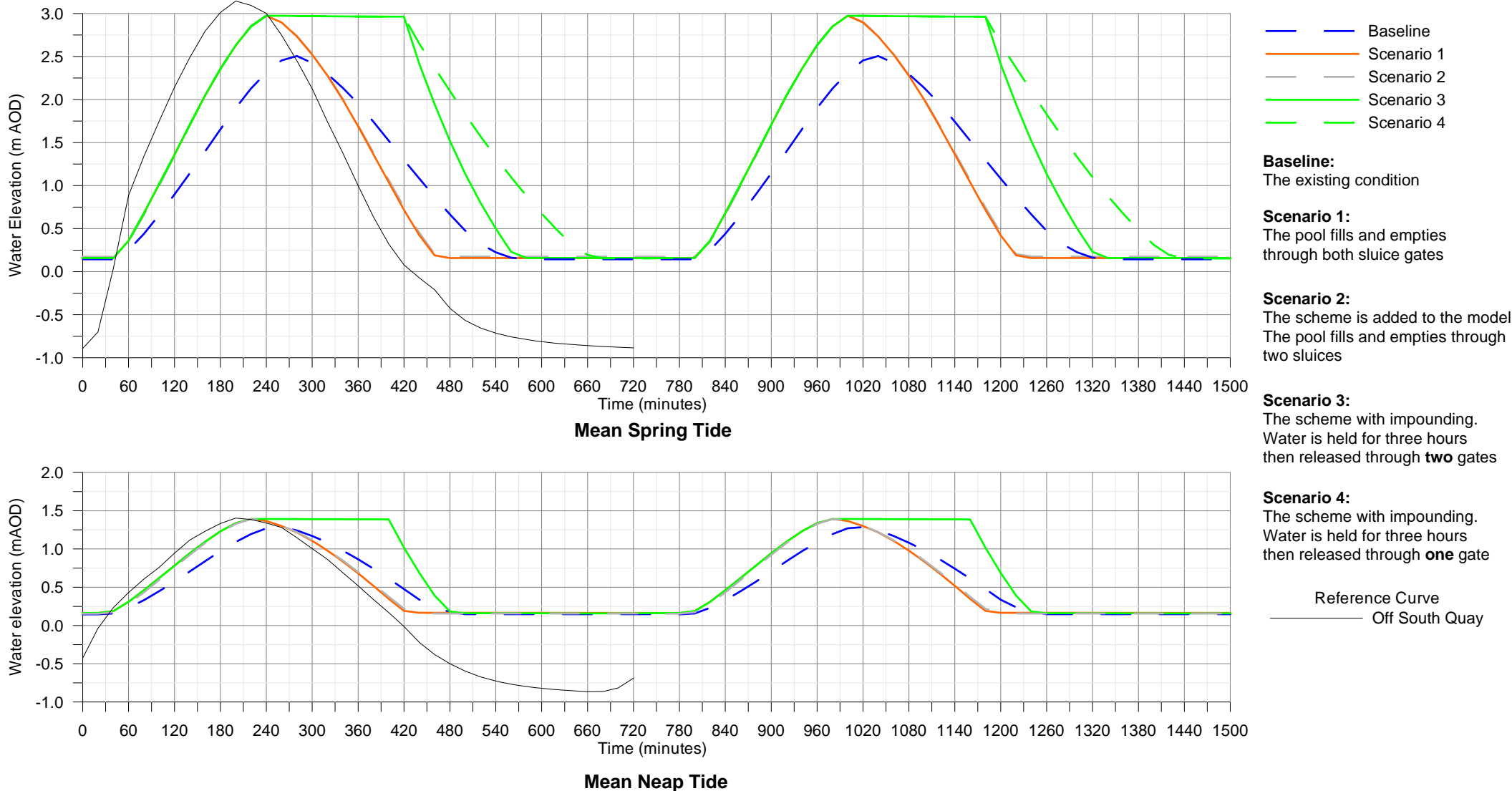
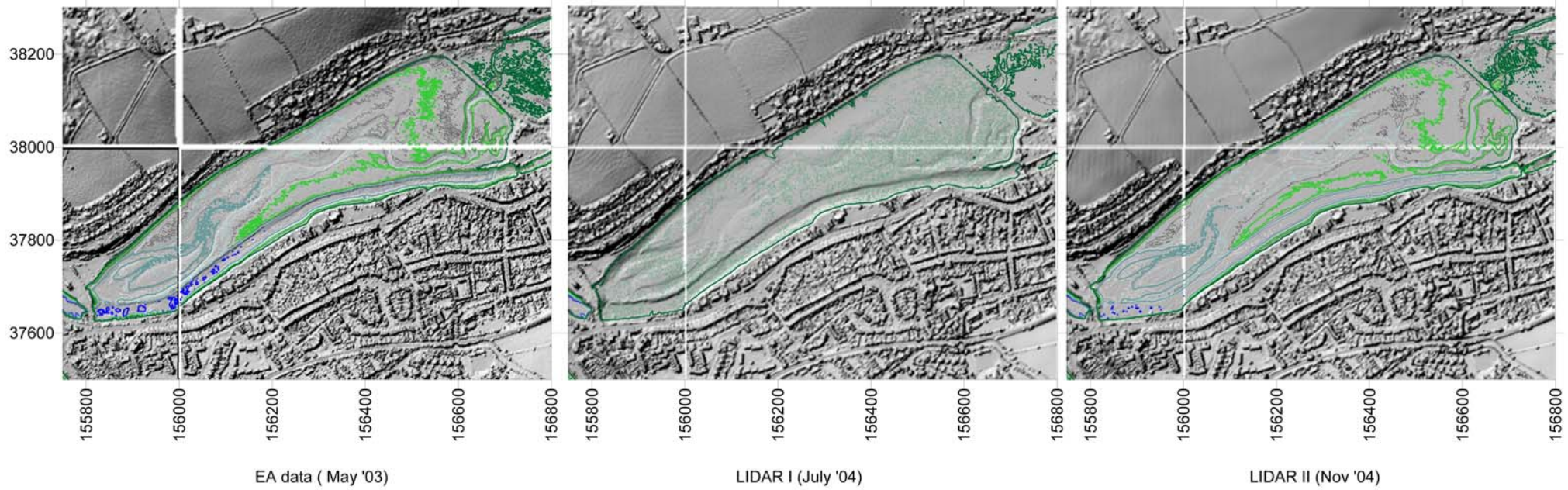


Figure 2
Carnsew Pool inundation levels



- 3.0m AOD
- 2.0m AOD
- 1.0m AOD
- 0.0m AOD

Aerial Photograph (2007)

Figure 3
Copperhouse Pool
LIDAR Contour comparison

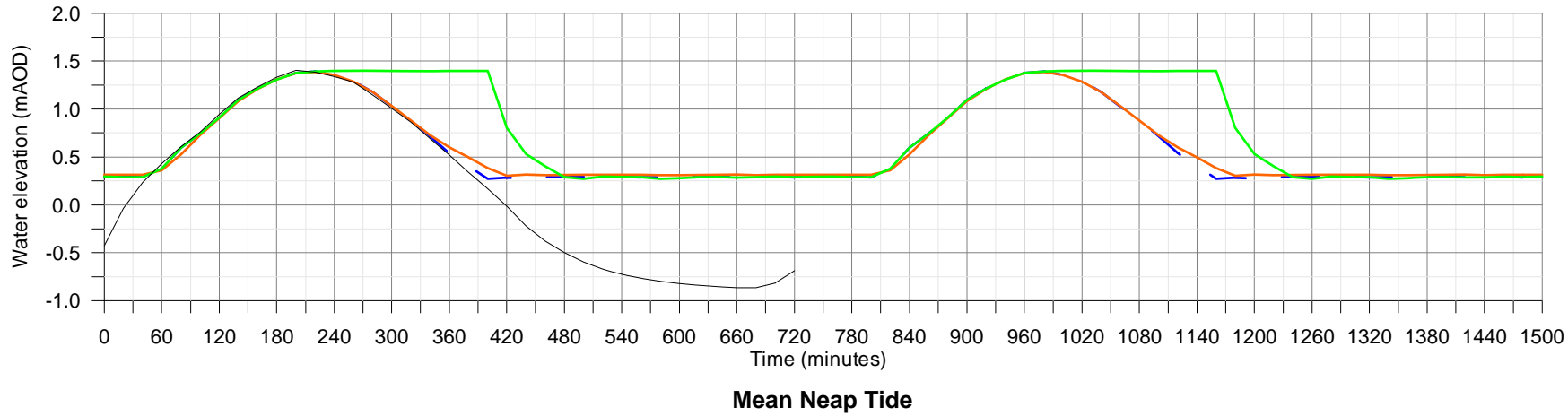
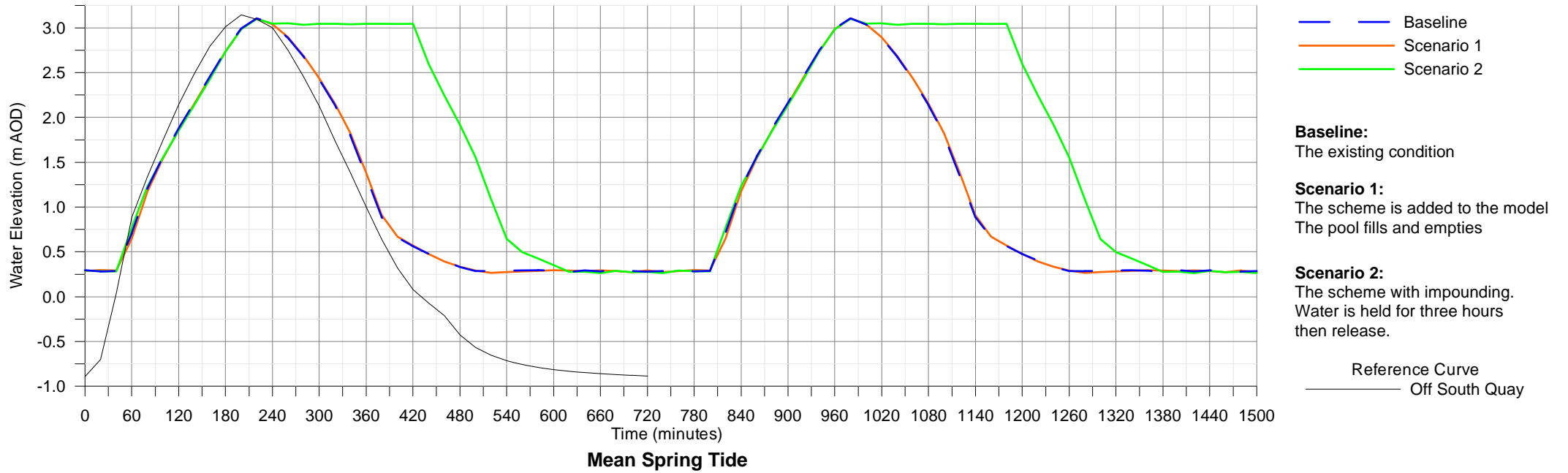
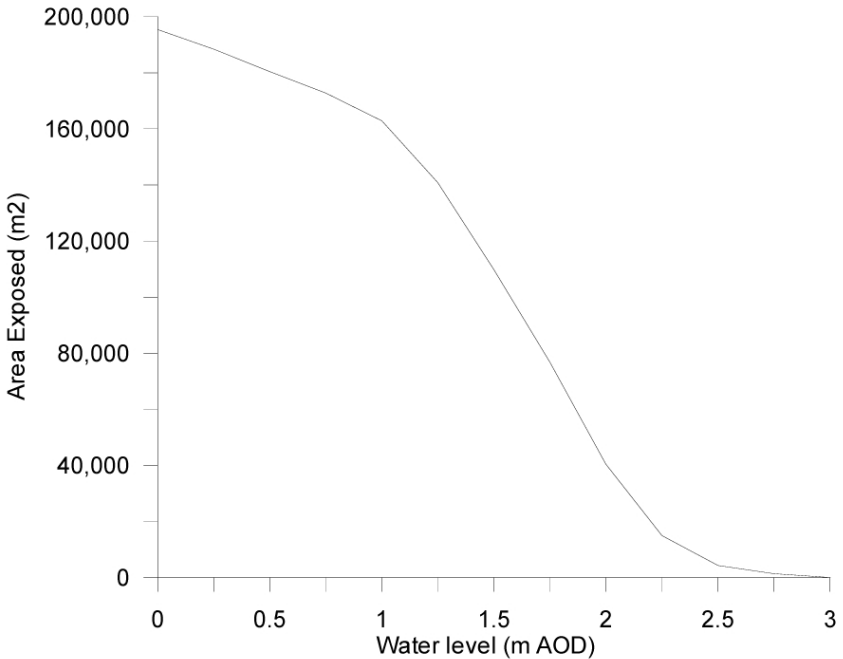
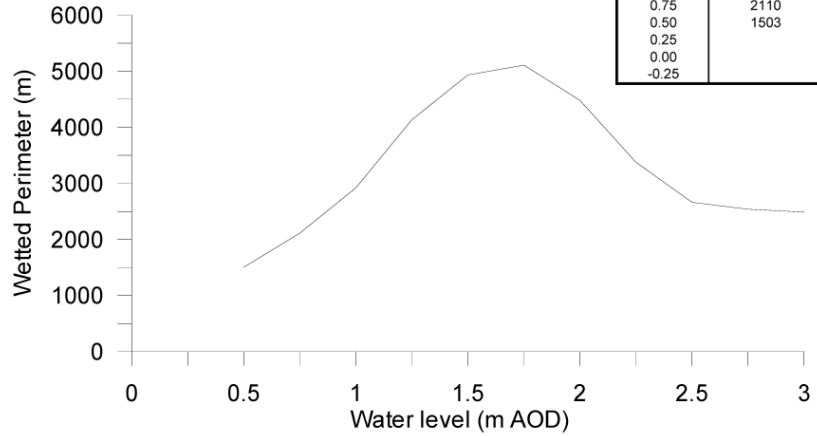


Figure 4
Copperhouse Pool Inundation Levels

Copperhouse Pool

Water Level (m OD)	Wet Perimeter (m)	Area Exposed (m2)
3.00	2490	0
2.75	2539	2539
2.50	2663	5202
2.25	3378	8580
2.00	4484	13064
1.75	5109	18173
1.50	4934	23107
1.25	4134	27241
1.00	2921	30162
0.75	2110	32272
0.50	1503	33775
0.25		33775
0.00		33775
-0.25		33775



Carnsew Pool

Water Level (m OD)	Wet Perimeter (m)	Area Exposed (m2)
3.00	1663	
2.75	1655	1355.262
2.50	1654	3309
2.25	1641	4950
2.00	1631	6581
1.75	1629	8210
1.50	1607	9817
1.25	1651	11468
1.00	1685	13153
0.75	1700	14853
0.50	1606	16459
0.25		16459
0.00		16459
-0.25		16459

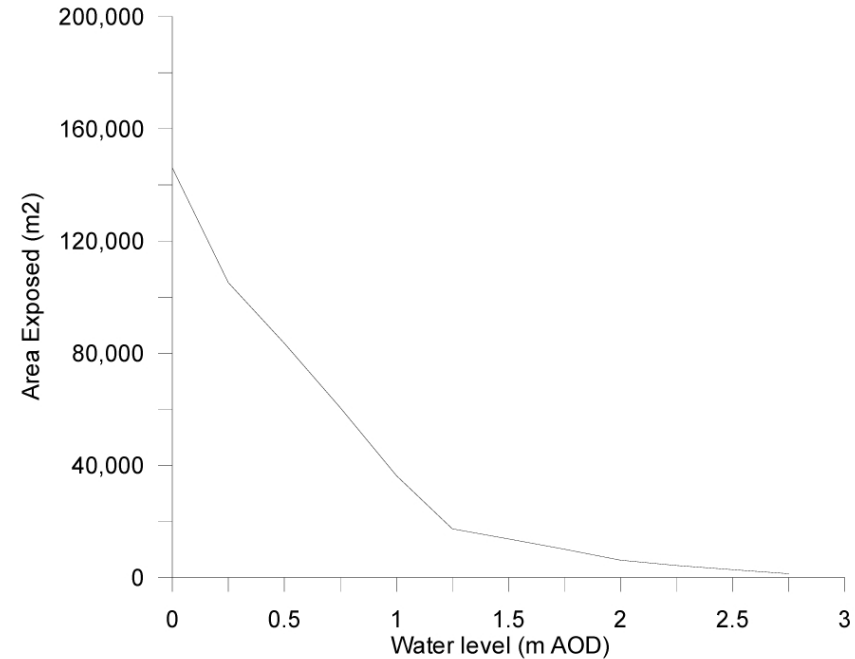
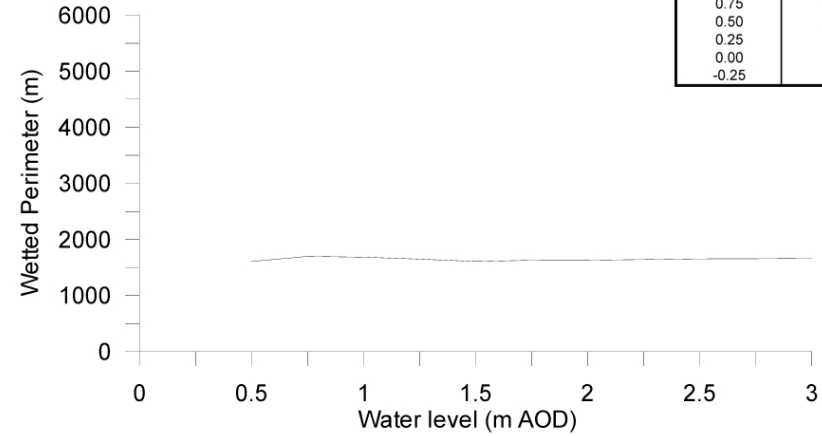
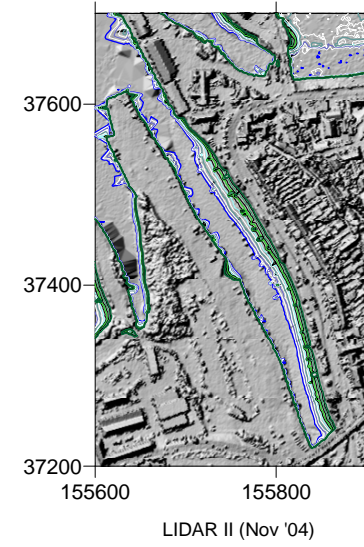
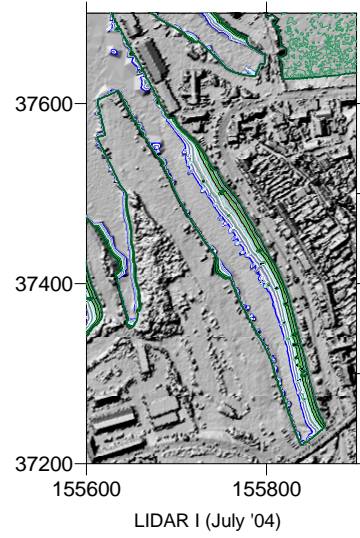
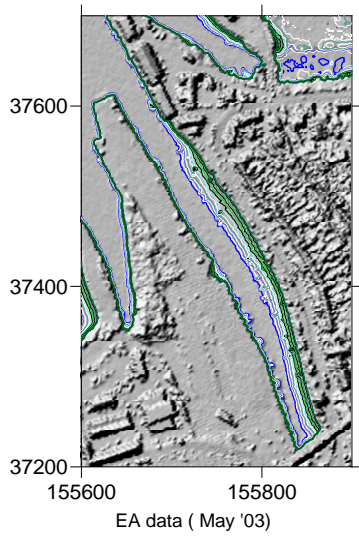


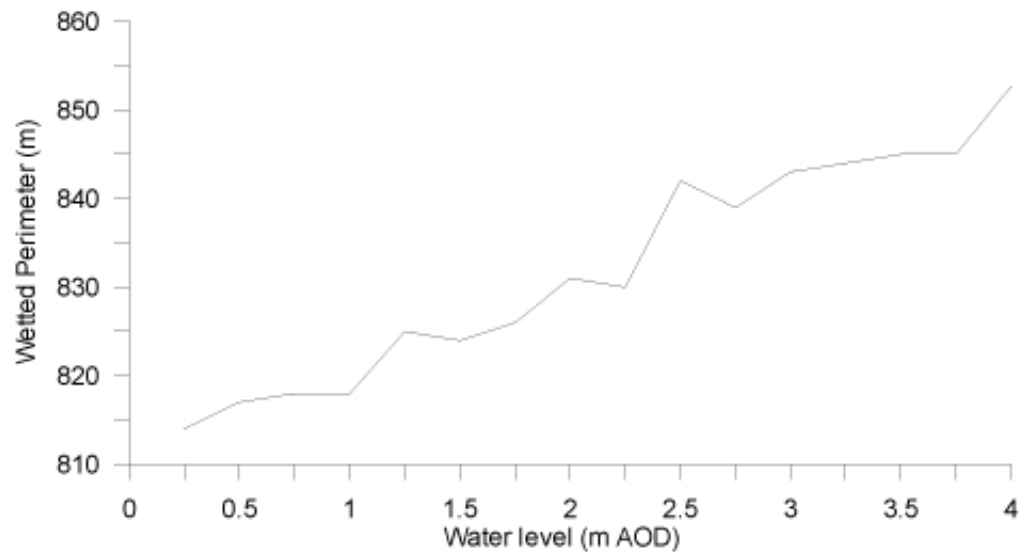
Figure 5
Pool Wetted Perimeter and
Area exposed by tide



Aerial Photograph (2007)

Figure 6
Penpol Creek
LIDAR Contour comparison

Penpol Creek



Water Level	Wet Perimeter (m)	Cumulative area exposed
4	853	
3.75	845	52.33
3.5	845	221.573
3.25	844	478.455
3	843	842.614
2.75	839	1373.337
2.5	842	2076.018
2.25	830	2843.18
2	831	3645.754
1.75	826	4480.45
1.5	824	5345.306
1.25	825	6220.453
1	818	7102.351
0.75	818	7956.257
0.5	817	8818.765
0.25	814	9742.858
0		10880.381

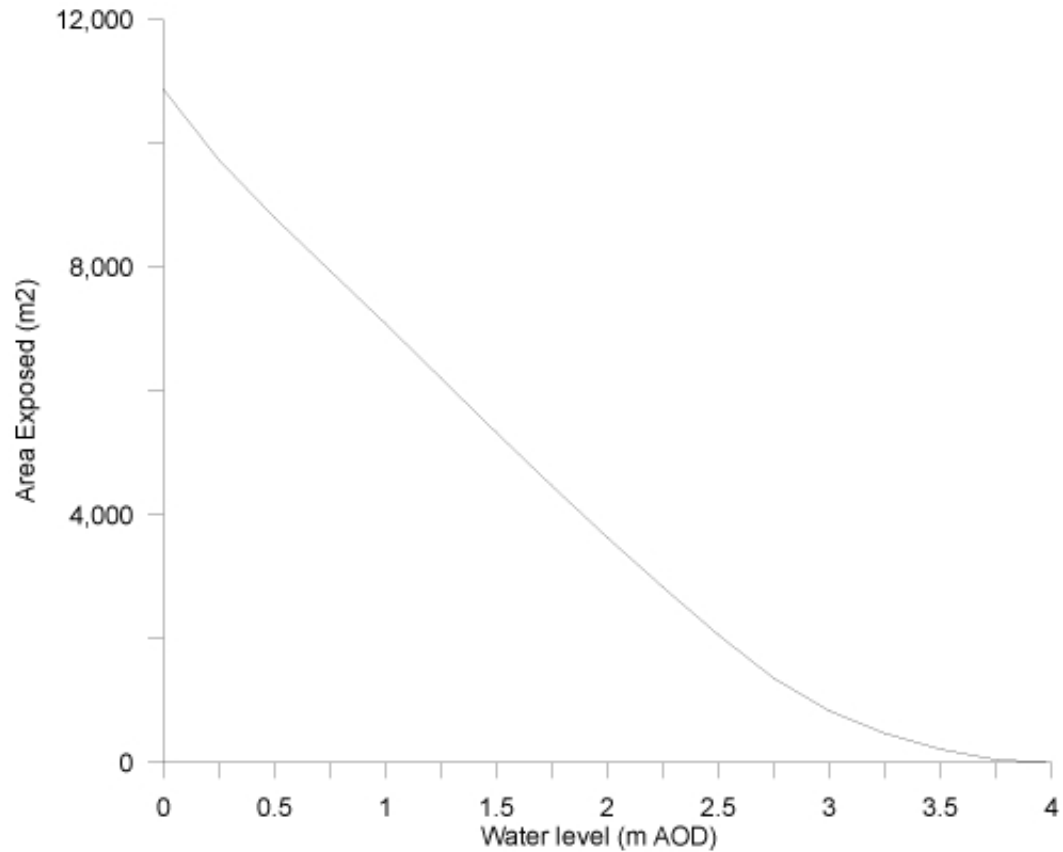


Figure 7
Penpol Creek Wetted Perimeter
and Area exposed by tide

Buro Happold Limited
Camden Mill
Lower Bristol Road
Bath
BA2 3DQ
UK

Telephone: +44 (0)1225 320600

Facsimile: +44 (0)870 787 4148

Email: coastal@burohappold.com