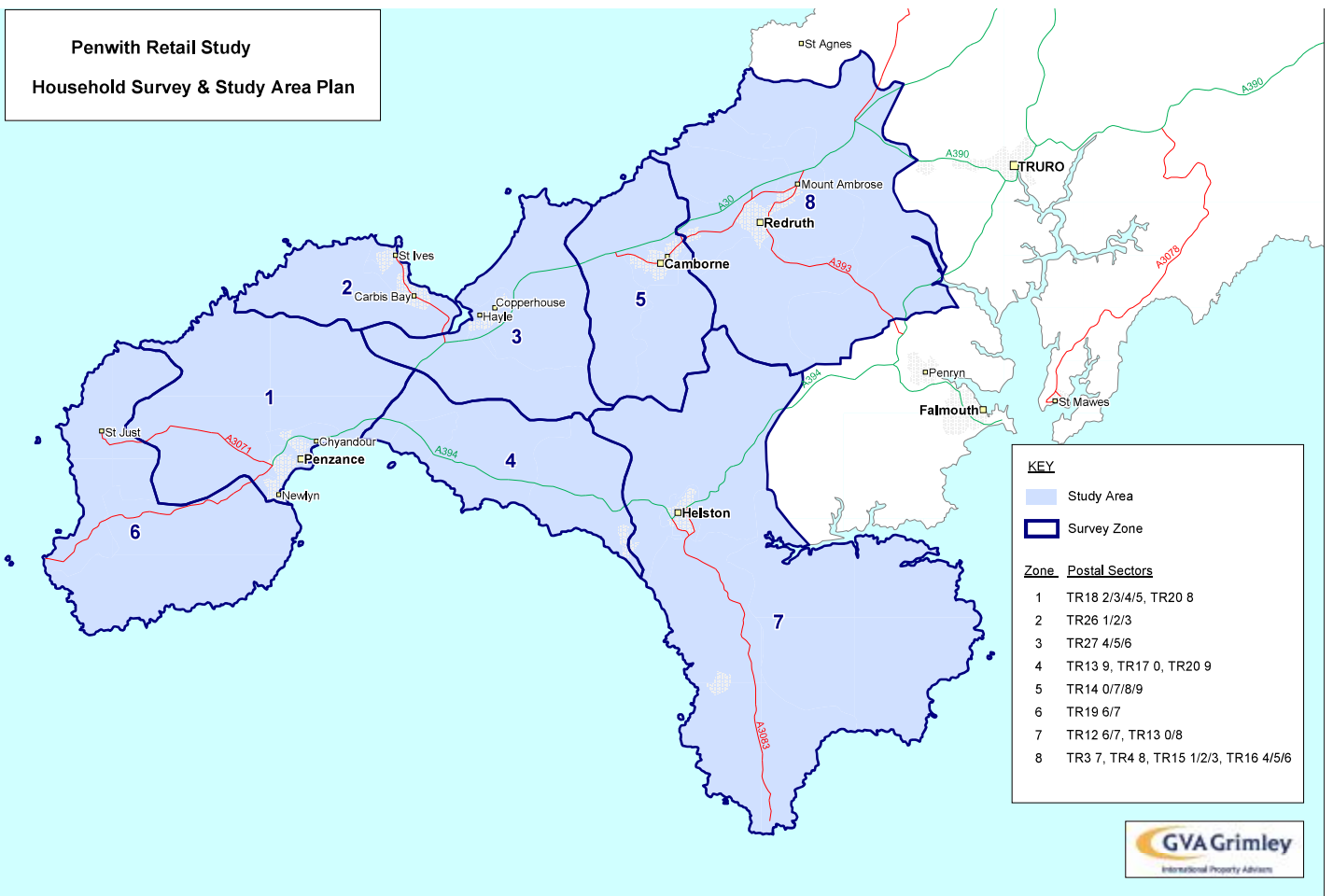


Penwith Retail Study
Household Survey & Study Area Plan



KEY

- Study Area
- Survey Zone

Zone	Postal Sectors
1	TR18 2/3/4/5, TR20 8
2	TR26 1/2/3
3	TR27 4/5/6
4	TR13 9, TR17 0, TR20 9
5	TR14 0/7/8/9
6	TR19 6/7
7	TR12 6/7, TR13 0/8
8	TR3 7, TR4 8, TR15 1/2/3, TR16 4/5/6

