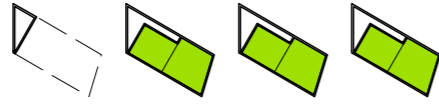


SCHEDULE OF AREAS

Gross Internal Floor Areas

Rev.A 18.07.11
Rev.B 19.07.11
Rev.C 20.07.11 *FINAL*
Rev.D 20.07.11 *FINAL Mk2*

RESIDENTIAL



Apartments - Carnsew
6No. Apartments over 3 raised floors
GIA 468m² (5,037ft²) excluding circulation
GEA 700m² (7,535ft²)



Apartments - North End
4 No. Apartments over 2 floors
GIA 276m² (2,970ft²) excluding circulation
GEA 396m² (4,262ft²)



No.20 3/4 Bed Wharf House @ 135m² each
GIA 2,700m² (29,062ft²)
excl. roof terraces, roof access and garages
GEA 3,790m² (40,795ft²)

Total 30 Dwellings as per previous scheme
GIA 3,444m² (37,070ft²)
GEA 4,886m² (52,592ft²)

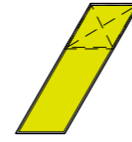
1 single garage per house + 10 spaces

CAR PARKING

Supermarket - 267 spaces
(inc. 16 disabled spaces
& 16 family spaces)

Foundry Retail
43 Spaces
(inc. 4 disabled spaces)

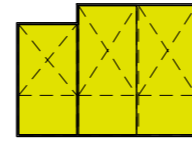
COMMERCIAL UNITS



Commercial with mezzanine
GIA 315m² + 92m² = 407m² (4,380ft²)
GEA 350m² + 123m² = 473m² (5,091ft²)

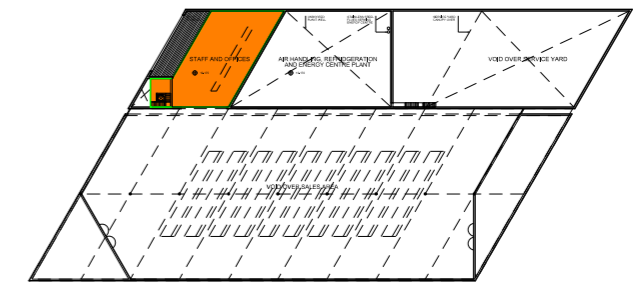
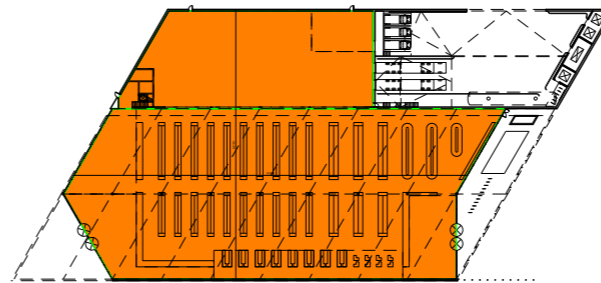


Restaurant
GIA 276m² (2,970ft²) Split Ground Floor + First Floor
GEA 356m² (3,830ft²)



Commercial - Foundry
GIA A-582m² (6,265ft²) B-704m² (7,575ft²) C-704m² (7,575ft²)
GEA 1265m² (13,615ft²)

FOODSTORE



GIA 5,230m² (56,295ft²)
Gross Sales Floor 3,570m² (38,427ft²)
Net Sales Floor 2,550m² (27,448ft²)
Back Up + Mezzanine (Staff) 1,252m² + 408m² (13,476ft² + 4,391ft²)
Plant at upper level 703m² (7,567ft²)

GEA Ground 4,926m² (52,023ft²) 'footprint'
Upper 451m² (4,854ft²)
Total 5,377m² (57,877ft²)